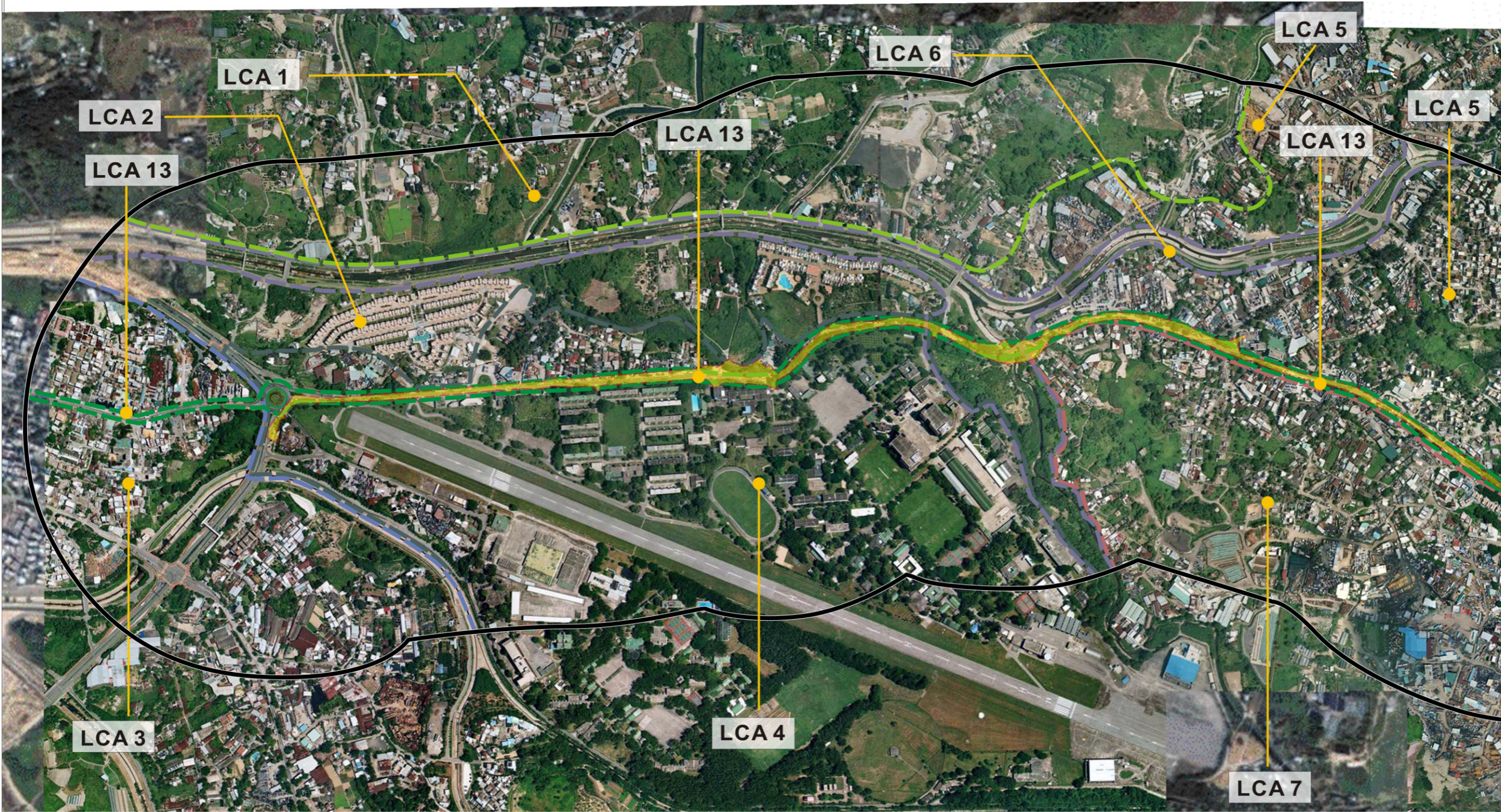


- Legend**
- Study Area
 - Proposed Scheme
 - LCA Boundary

- Landscape Character Areas**
- LCA1: Tsat Sing Kong Lowland Rural Landscape
 - LCA2: Pang Ka Tsuen Lowland Rural and Low-rise Residential Landscape
 - LCA3: Kam Tin Lowland Rural Landscape
 - LCA4: Shek Kong Barracks Landscape (Shek Kong)
 - LCA5: Wang Toi Shan Village Landscape
 - LCA6: Kam Tin Modified Water Course Landscape
 - LCA7: Shek Kong Lowland Rural Landscape
 - LCA8: Lam Tsuen Country Park Hillside Landscape
 - LCA9: Sheung Tsuen Lowland Rural Landscape
 - LCA10: Shek Kong Barracks Landscape (Shek Kong Tsuen)
 - LCA11: Kwun Yam Shan Miscellaneous Rural Fringe Landscape
 - LCA12: Kwun Yam Shan Upland and Hillside Landscape
 - LCA13: Kam Tin Road and Lam Kam Road Corridor



Client
 HIGHWAYS DEPARTMENT WORKS DIVISION

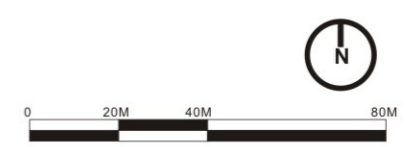
Consultants
Mannings (Asia) Consultants Ltd
in association with
BMT Asia Pacific

ADI LIMITED
 LANDSCAPE ARCHITECTURE, URBAN DESIGN AND MASTER PLANNING
 10/F BANGKOK BANK BUILDING, 18 BONHOM STRAND WEST, HONG KONG
 電話: 852 2131 8831 傳真: 852 2131 8830
 香港建築師學會註冊編號: 2131 2130 2131 2132
 香港測量師學會註冊編號: 2131 2130 2131 2132
 香港工程師學會註冊編號: 2131 2130 2131 2132
 香港測量師學會註冊編號: 2131 2130 2131 2132
 香港工程師學會註冊編號: 2131 2130 2131 2132
 香港測量師學會註冊編號: 2131 2130 2131 2132

Project
 Agreement No. WD 7/2007
 Upgrading of Remaining Sections
 of Kam Tin Road & Lam Kam Road
 Environmental Impact Assessment


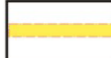

Title
 Landscape Character Areas Photographs

Drawing No. Figure 9.5A	Revision A
----------------------------	---------------





Legend

-  Study Area
-  Proposed Scheme
-  LCA Boundary

- Landscape Character Areas**
- LCA1: Tsat Sing Kong Lowland Rural Landscape
 - LCA2: Pang Ka Tsuen Lowland Rural and Low-rise Residential Landscape
 - LCA3: Kam Tin Lowland Rural Landscape
 - LCA4 : Shek Kong Barracks Landscape (Shek Kong)
 - LCA5: Wang Toi Shan Village Landscape
 - LCA6: Kam Tin Modified Water Course Landscape
 - LCA7: Shek Kong Lowland Rural Landscape
 - LCA8: Lam Tsuen Country Park Hillside Landscape
 - LCA9: Sheung Tsuen Lowland Rural Landscape
 - LCA10: Shek Kong Barracks Landscape (Shek Kong Tsuen)
 - LCA11: Kwun Yam Shan Miscellaneous Rural Fringe Landscape
 - LCA12: Kwun Yam Shan Upland and Hillside Landscape
 - LCA13: Kam Tin Road and Lam Kam Road Corridor

Client



HIGHWAYS DEPARTMENT WORKS DIVISION

Consultants

Mannings (Asia) Consultants Ltd
in association with
BMT Asia Pacific

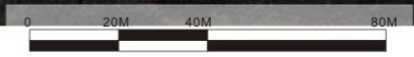


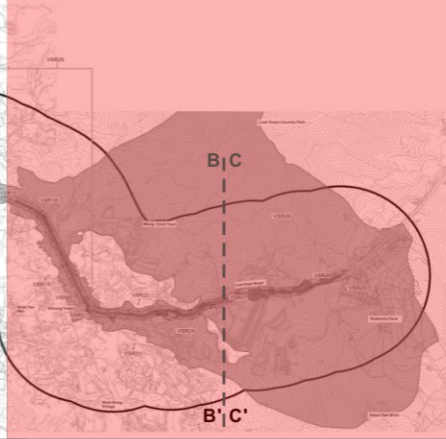
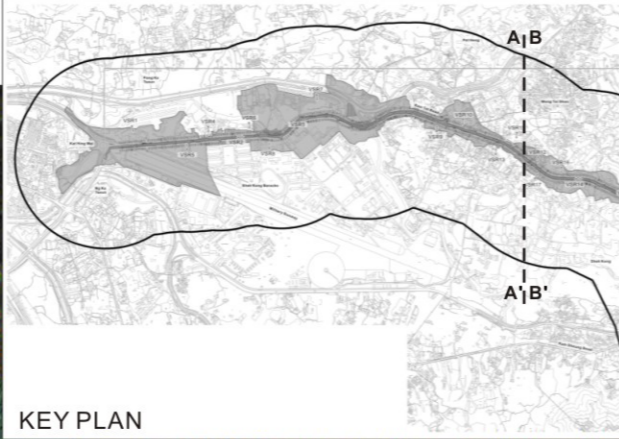
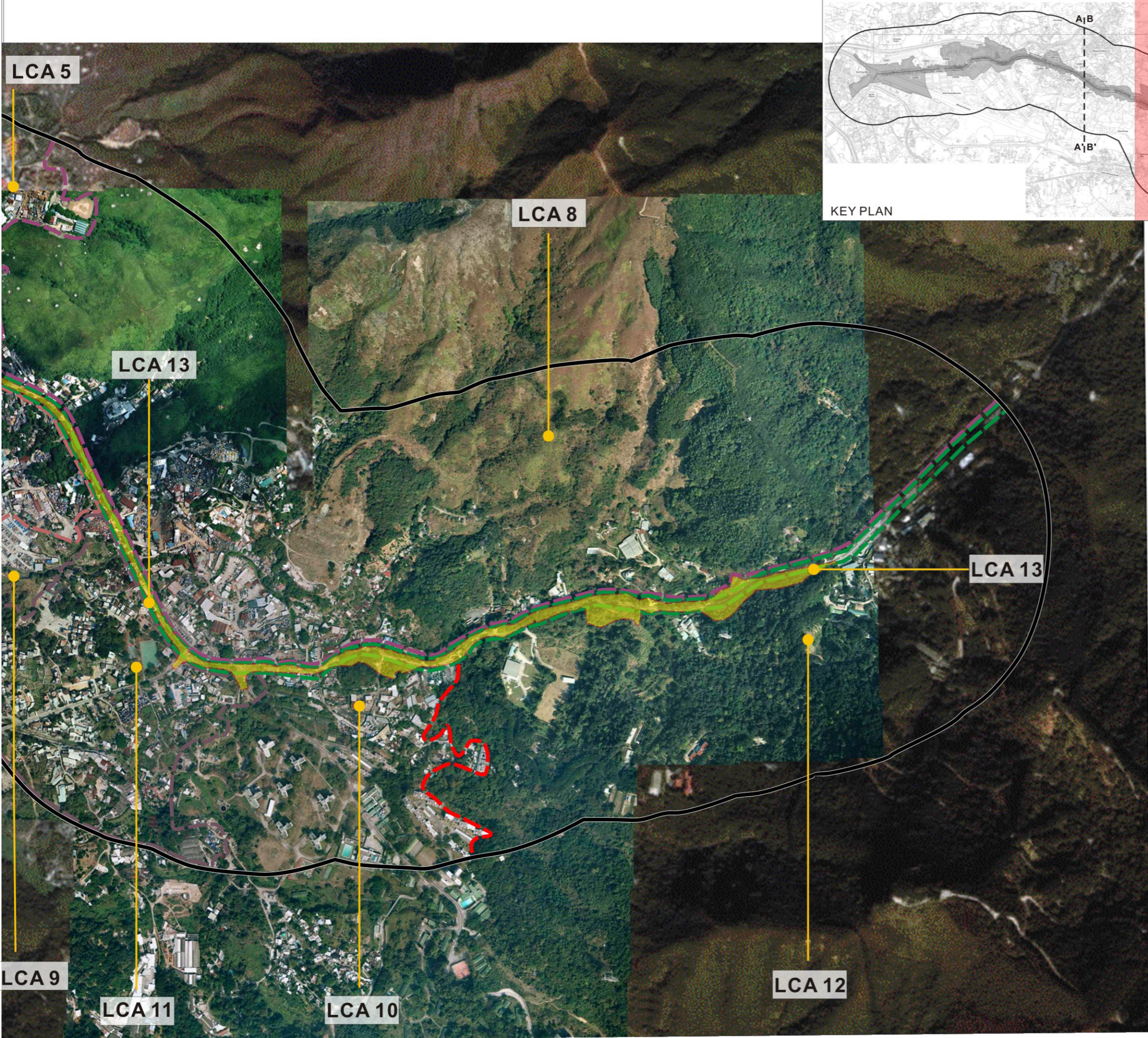
ADI LIMITED
LANDSCAPE ARCHITECTURE, URBAN DESIGN AND MASTER PLANNING
10/F BANGKOK BANK BUILDING, 18 BONHOM STRAND WEST, HONG KONG
電話: 852 2511 8800
傳真: 852 2511 8801
香港特別行政區政府
香港土地工務局
香港上環文咸東街18號香港銀行大廈十樓
電話: (A&C) 2-2-1 ANNEX 樓上, (A&C) 2-2-1 ANNEX


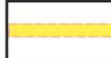

Project
Agreement No. WD 7/2007
Upgrading of Remaining Sections
of Kam Tin Road & Lam Kam Road
Environmental Impact Assessment

Title
Landscape Character Areas Photographs

Drawing No. Figure 9.5B	Revision A
----------------------------	---------------





- Legend**
-  Study Area
 -  Proposed Scheme
 -  LCA Boundary

- Landscape Character Areas**
- LCA1: Tsat Sing Kong Lowland Rural Landscape
 - LCA2: Pang Ka Tsuen Lowland Rural and Low-rise Residential Landscape
 - LCA3: Kam Tin Lowland Rural Landscape
 - LCA4 : Shek Kong Barracks Landscape (Shek Kong)
 - LCA5: Wang Toi Shan Village Landscape
 - LCA6: Kam Tin Modified Water Course Landscape
 - LCA7: Shek Kong Lowland Rural Landscape
 - LCA8: Lam Tsuen Country Park Hillside Landscape
 - LCA9: Sheung Tsuen Lowland Rural Landscape
 - LCA10: Shek Kong Barracks Landscape (Shek Kong Tsuen)
 - LCA11: Kwun Yam Shan Miscellaneous Rural Fringe Landscape
 - LCA12: Kwun Yam Shan Upland and Hillside Landscape
 - LCA13: Kam Tin Road and Lam Kam Road Corridor

Client
 **HIGHWAYS DEPARTMENT WORKS DIVISION**

Consultants
Mannings (Asia) Consultants Ltd
in association with
BMT Asia Pacific

 **ADI LIMITED**
 LANDSCAPE ARCHITECTURE, URBAN DESIGN AND MASTER PLANNING
 10/F BANGKOK BANK BUILDING, 18 BONHAY STRAND WEST, HONG KONG
 香港中環皇后大道西18號香港銀行大廈10樓
 電話: (852) 2131 8800 傳真: (852) 2131 8809
 香港中環皇后大道西18號香港銀行大廈10樓
 電話: (852) 2131 8800 傳真: (852) 2131 8809

Project
 Agreement No. WD 7/2007
 Upgrading of Remaining Sections of Kam Tin Road & Lam Kam Road Environmental Impact Assessment

Title
 Landscape Character Areas Photographs



Drawing No. Figure 9.5C	Revision A
----------------------------	---------------



LCA1 Tsat Sing Kong Lowland Rural Landscape



LCA2 Pang Ka Tsuen Lowland Rural and Low-rise Residential Landscape



LCA2 Pang Ka Tsuen Lowland Rural and Low-rise Residential Landscape

Legend

Landscape Character Areas

- LCA1: Tsat Sing Kong Lowland Rural Landscape
- LCA2: Pang Ka Tsuen Lowland Rural and Low-rise Residential Landscape
- LCA3: Kam Tin Lowland Rural Landscape
- LCA4 : Shek Kong Barracks Landscape (Shek Kong)
- LCA5: Wang Toi Shan Village Landscape
- LCA6: Kam Tin Modified Water Course Landscape
- LCA7: Shek Kong Lowland Rural Landscape
- LCA8: Lam Tsuen Country Park Hillside Landscape
- LCA9: Sheung Tsuen Lowland Rural Landscape
- LCA10: Shek Kong Barracks Landscape (Shek Kong Tsuen)
- LCA11: Kwun Yam Shan Miscellaneous Rural Fringe Landscape
- LCA12: Kwun Yam Shan Upland and Hillside Landscape
- LCA13: Kam Tin Road and Lam Kam Road Corridor

Client
 **HIGHWAYS DEPARTMENT WORKS DIVISION**

Consultants
Mannings (Asia) Consultants Ltd
in association with
BMT Asia Pacific

 **ADI** LIMITED
 LANDSCAPE ARCHITECTURE, URBAN DESIGN AND MASTER PLANNING
 10/F BANGKOK BANK BUILDING, 18 BONHAY STRAND WEST, HONG KONG
 香港中環德輔道西18號10樓
 電話: (852) 2131 8831 FACSIMILE: 2131 8820
 傳真: (852) 2131 8821
 傳呼: (852) 2131 8822
 傳呼: (852) 2131 8823
 傳呼: (852) 2131 8824
 傳呼: (852) 2131 8825
 傳呼: (852) 2131 8826
 傳呼: (852) 2131 8827
 傳呼: (852) 2131 8828
 傳呼: (852) 2131 8829
 傳呼: (852) 2131 8830

Project
 Agreement No. WD 7/2007
 Upgrading of Remaining Sections
 of Kam Tin Road & Lam Kam Road
 Environmental Impact Assessment

Title
 Landscape Character Areas Photographs

Drawing No. Figure 9.5D	Revision A
----------------------------	---------------



LCA3 Kam Tin Lowland Rural Landscape



LCA4 Shek Kong Barracks Landscape (Shek Kong)



LCA5 Wang Toi Shan Village Landscape

Legend

Landscape Character Areas

- LCA1: Tsat Sing Kong Lowland Rural Landscape
- LCA2: Pang Ka Tsuen Lowland Rural and Low-rise Residential Landscape
- LCA3: Kam Tin Lowland Rural Landscape
- LCA4 : Shek Kong Barracks Landscape (Shek Kong)
- LCA5: Wang Toi Shan Village Landscape
- LCA6: Kam Tin Modified Water Course Landscape
- LCA7: Shek Kong Lowland Rural Landscape
- LCA8: Lam Tsuen Country Park Hillside Landscape
- LCA9: Sheung Tsuen Lowland Rural Landscape
- LCA10: Shek Kong Barracks Landscape (Shek Kong Tsuen)
- LCA11: Kwun Yam Shan Miscellaneous Rural Fringe Landscape
- LCA12: Kwun Yam Shan Upland and Hillside Landscape
- LCA13: Kam Tin Road and Lam Kam Road Corridor

Client
 **HIGHWAYS DEPARTMENT WORKS DIVISION**

Consultants
Mannings (Asia) Consultants Ltd
in association with
BMT Asia Pacific

 **ADI**
ADI LIMITED
 LANDSCAPE ARCHITECTURE, URBAN DESIGN AND MASTER PLANNING
 10/F BANGKOK BANK BUILDING, 18 BONHOM STRAND WEST, HONG KONG
 電話: 852 2131 8831 FACSIMILE: 2131 8830
 傳真: 852 2131 8831 設計: 95 95 95 公司
 總行: 香港中環皇后大道中18號香港銀行大廈十樓
 香港: (A82) 2-18-1 A82 香港: (A82) 2-18-1 A82A

Project
 Agreement No. WD 7/2007
 Upgrading of Remaining Sections
 of Kam Tin Road & Lam Kam Road
 Environmental Impact Assessment

Title
 Landscape Character Areas Photographs

Drawing No. Figure 9.5E	Revision A
----------------------------	---------------



LCA6 Kam Tin Modified Water Course Landscape



LCA7 Shek Kong Lowland Rural Landscape

Legend

Landscape Character Areas

- LCA1: Tsat Sing Kong Lowland Rural Landscape
- LCA2: Pang Ka Tsuen Lowland Rural and Low-rise Residential Landscape
- LCA3: Kam Tin Lowland Rural Landscape
- LCA4 : Shek Kong Barracks Landscape (Shek Kong)
- LCA5: Wang Toi Shan Village Landscape
- LCA6: Kam Tin Modified Water Course Landscape
- LCA7: Shek Kong Lowland Rural Landscape
- LCA8: Lam Tsuen Country Park Hillside Landscape
- LCA9: Sheung Tsuen Lowland Rural Landscape
- LCA10: Shek Kong Barracks Landscape (Shek Kong Tsuen)
- LCA11: Kwun Yam Shan Miscellaneous Rural Fringe Landscape
- LCA12: Kwun Yam Shan Upland and Hillside Landscape
- LCA13: Kam Tin Road and Lam Kam Road Corridor

Client
 **HIGHWAYS DEPARTMENT WORKS DIVISION**

Consultants
Mannings (Asia) Consultants Ltd
in association with
BMT Asia Pacific

 **ADI** LIMITED
 LANDSCAPE ARCHITECTURE, URBAN DESIGN AND MASTER PLANNING
 10/F BANGKOK BANK BUILDING, 18 BONHAM STRAND WEST, HONG KONG
 電話: 852 2131 8831 FACSIMILE: 2131 8820
 地址: 香港德輔道西 18 號 10 樓 ADI 公司
 總行: 香港德輔道西 18 號 10 樓
 廣東省: 廣東省城 廣州 德政路 10 號 10 樓
 廣東省: 廣東省城 廣州 德政路 10 號 10 樓
 電話: (A&C) 2-2-1- A&C 總行, (A&C) 2-2-1- A&C

Project
 Agreement No. WD 7/2007
 Upgrading of Remaining Sections
 of Kam Tin Road & Lam Kam Road
 Environmental Impact Assessment

Title
 Landscape Character Areas Photographs

Drawing No. Figure 9.5F	Revision A
----------------------------	---------------



LCA8 Lam Tsuen Country Park Hillside Landscape



LCA9 Sheung Tsuen Lowland Rural Landscape

Legend

Landscape Character Areas

LCA1: Tsat Sing Kong Lowland Rural Landscape

LCA2: Pang Ka Tsuen Lowland Rural and Low-rise Residential Landscape

LCA3: Kam Tin Lowland Rural Landscape

LCA4 : Shek Kong Barracks Landscape (Shek Kong)

LCA5: Wang Toi Shan Village Landscape

LCA6: Kam Tin Modified Water Course Landscape

LCA7: Shek Kong Lowland Rural Landscape

LCA8: Lam Tsuen Country Park Hillside Landscape

LCA9: Sheung Tsuen Lowland Rural Landscape

LCA10: Shek Kong Barracks Landscape (Shek Kong Tsuen)

LCA11: Kwun Yam Shan Miscellaneous Rural Fringe Landscape

LCA12: Kwun Yam Shan Upland and Hillside Landscape

LCA13: Kam Tin Road and Lam Kam Road Corridor

Client
 **HIGHWAYS DEPARTMENT WORKS DIVISION**

Consultants
Mannings (Asia) Consultants Ltd
in association with
BMT Asia Pacific

 **ADI** LIMITED
 LANDSCAPE ARCHITECTURE, URBAN DESIGN AND MASTER PLANNING
 10/F BANGKOK BANK BUILDING, 18 BONHAY STRAND WEST, HONG KONG
 TELEPHONE 2131 8831 FACSIMILE 2131 8820
 香港德輔道西18號10樓曼寧亞洲顧問有限公司
 電話：(八五二) 2131 8831 傳真：(八五二) 2131 8820

Project
 Agreement No. WD 7/2007
 Upgrading of Remaining Sections
 of Kam Tin Road & Lam Kam Road
 Environmental Impact Assessment

Title
 Landscape Character Areas Photographs

Drawing No. Figure 9.5G	Revision A
----------------------------	---------------

Legend

Landscape Character Areas

- LCA1: Tsat Sing Kong Lowland Rural Landscape
- LCA2: Pang Ka Tsuen Lowland Rural and Low-rise Residential Landscape
- LCA3: Kam Tin Lowland Rural Landscape
- LCA4 : Shek Kong Barracks Landscape (Shek Kong)
- LCA5: Wang Toi Shan Village Landscape
- LCA6: Kam Tin Modified Water Course Landscape
- LCA7: Shek Kong Lowland Rural Landscape
- LCA8: Lam Tsuen Country Park Hillside Landscape
- LCA9: Sheung Tsuen Lowland Rural Landscape
- LCA10: Shek Kong Barracks Landscape (Shek Kong Tsuen)
- LCA11: Kwun Yam Shan Miscellaneous Rural Fringe Landscape
- LCA12: Kwun Yam Shan Upland and Hillside Landscape
- LCA13: Kam Tin Road and Lam Kam Road Corridor



LCA10 Shek Kong Barracks Landscape (Shek Kong Tsuen)



LCA10 Shek Kong Barracks Landscape (Shek Kong Tsuen)

Client
 **HIGHWAYS DEPARTMENT WORKS DIVISION**

Consultants
Mannings (Asia) Consultants Ltd
in association with
BMT Asia Pacific

 **ADI** LIMITED
 LANDSCAPE ARCHITECTURE, URBAN DESIGN AND MASTER PLANNING
 10/F BANGKOK BANK BUILDING, 18 BONHAY STRAND WEST, HONG KONG
 香港中環德輔道西18號10樓
 電話: (852) 2521 8821 傳真: (852) 2521 8820
 傳呼: (852) 2521 8820 2521 8820
 傳呼: (852) 2521 8820 2521 8820
 傳呼: (852) 2521 8820 2521 8820

Project
 Agreement No. WD 7/2007
 Upgrading of Remaining Sections
 of Kam Tin Road & Lam Kam Road
 Environmental Impact Assessment

Title
 Landscape Character Areas Photographs

Drawing No. Figure 9.5H	Revision A
----------------------------	---------------



LCA11 Kwun Yam Shan Miscellaneous Rural Fringe Landscape



LCA12 Kwun Yam Shan Upland and Hillside Landscape



LCA13 Kam Tin Road Landscape



LCA13 Lam Kam Road Landscape

Legend

Landscape Character Areas

- LCA1: Tsat Sing Kong Lowland Rural Landscape
- LCA2: Pang Ka Tsuen Lowland Rural and Low-rise Residential Landscape
- LCA3: Kam Tin Lowland Rural Landscape
- LCA4 : Shek Kong Barracks Landscape (Shek Kong)
- LCA5: Wang Toi Shan Village Landscape
- LCA6: Kam Tin Modified Water Course Landscape
- LCA7: Shek Kong Lowland Rural Landscape
- LCA8: Lam Tsuen Country Park Hillside Landscape
- LCA9: Sheung Tsuen Lowland Rural Landscape
- LCA10: Shek Kong Barracks Landscape (Shek Kong Tsuen)
- LCA11: Kwun Yam Shan Miscellaneous Rural Fringe Landscape
- LCA12: Kwun Yam Shan Upland and Hillside Landscape
- LCA13: Kam Tin Road and Lam Kam Road Corridor

Client
 **HIGHWAYS DEPARTMENT WORKS DIVISION**

Consultants
Mannings (Asia) Consultants Ltd
in association with
BMT Asia Pacific

 **ADI LIMITED**
 LANDSCAPE ARCHITECTURE, URBAN DESIGN AND MASTER PLANNING
 10/F BANGKOK BANK BUILDING, 18 BONHAY STRAND WEST, HONG KONG
 香港中環德輔道西18號10樓
 電話: (852) 2131 8831 傳真: (852) 2131 8830
 傳呼: (852) 2131 8831 2131 8830
 傳真: (852) 2131 8831 2131 8830
 傳呼: (852) 2131 8831 2131 8830

Project
 Agreement No. WD 7/2007
 Upgrading of Remaining Sections
 of Kam Tin Road & Lam Kam Road
 Environmental Impact Assessment

Title
 Landscape Character Areas Photographs

Drawing No. Figure 9.51	Revision A
----------------------------	---------------